

Easy Pumping, Non-Drip Nozzle,  
Ergonomic Handles, Durable & Long Lasting  
Neck Size 28/410

**3NB Original in**  
Blue, Red, White, Yellow  
& Green Colours

**3SE Chemical**  
Res. Black Only

**5A Jumbo in Red**  
or Blue



3NB

3SE

5A

## REFILLABLE AEROSOL

VOLKANEX / USA

Environment Friendly Aerosol, Refillable, Reusable, Extra Versatile

**Heavy Duty Stainless Steel OR Nickel Plated Brushed Aluminum Body**  
**Pressurised by Compressed Air or Air Pump**

**Application:** Cleaning - Auto Detailing - Pest Control

- Easy Pressurising
- Teflon & Viton Seals
- Chrome Plated Brass Head
- Max. Pressure 200psi / 14 bar
- Actual Capacity 850ml
- Liquid Capacity 470ml
- Comes with Fine, Regular, Medium & Coarse Nozzles Plus An Extra Valve
- Optional Adjustable Nozzle

[BACK TO TOP >](#)



RA/B8500CB

## PIN-SPRAY / REFILLABLE AEROSOL

VOLKANEX / USA

**Heavy Duty Stainless Steel OR Nickel Plated Brushed Aluminum Body**  
**Pressurised by Compressed Air or Air Pump**

**Application:** An ideal tool for professional pest control  
Operators can apply chemicals into cracks, holes, gaps, corners & hard to reach places with perfect control & accurate spraying.

- 1.2m Polyurethane Spiral Hose (Stretched).
- Middle Nozzle & Pen Type Grip.
- Teflon & Viton Seals
- Chrome Plated Brass Head
- Max. Pressure 200psi / 14 bar
- Actual Capacity 850ml
- Liquid Capacity 470ml

[BACK TO TOP >](#)



RA/B8500PS

- VITON Seals
- Easy Pressurising
- Heavy Duty Nylon/PPN Head & Pump
- Liquid Capacity 0.9lit.
- Adjustable Nozzle 0.8
- Automatic Safety Pressure Valve
- Max. Pressure 3bar/44psi
- V4A / S.Steel Springs

Colour	Application
Red VS/040054	Solvent or aggressive based chemicals such as Tyre Shine, Degreasers, Brake Cleaner .....
Yellow VS/040282	General cleaning chemicals(Diluted Acid & less aggressive Solvent based chemicals) <i>Hydrofluoric acid, Formic acid or higher concentrations of Acetic and Propionic acid are not recommended for use in this sprayer.</i>

#### Optional Accessories

- 30 cm Extension Lance & Nozzle. Made of Rigid PVC, Chrome Plated Brass Polyuratan Flexible Tube
- Brass Insert Nozzle 0.5mm for Finer Pattern

[BACK TO TOP >](#)



VS/040054

- VITON Seals
- Easy Pressurising
- Heavy Duty Nylon/PPN Head & Pump
- Liquid Capacity 1.3lit.
- Adjustable Nozzle 0.8
- Automatic Safety Pressure Valve
- Max. Pressure 4bar/58psi
- V4A / S.Steel Springs

Colour	Application
Red VS/040090	Solvent or aggressive based chemicals such as Tyre Shine, Degreasers, Brake Cleaner .....
Yellow VS/040158	General cleaning chemicals(Diluted Acid & less aggressive Solvent based chemicals) <i>Hydrofluoric acid, Formic acid or higher concentrations of Acetic and Propionic acid are not recommended for use in this sprayer.</i>

#### Optional Accessories

- 30 cm Extension Lance & Nozzle. Made of Rigid PVC, Chrome Plated Brass Polyuratan Flexible Tube
- Brass Insert Nozzle 0.5mm for Finer Pattern

[BACK TO TOP >](#)



VS/040090

**Application:** Auto detailing, Carpet & Upholstery Cleaning

**Features:**

- VITON Seals
- Heavy Duty Nylon Head & Pump
- Liquid Capacity 1.5lit.
- Adjustable Brass Insert Nozzle 0.8
- Automatic Safety Pressure Valve
- Max. Pressure 4bar/58psi
- S.Steel Springs

**\*Dual system** sprayer provides an options for pressurizing, either with manual pumping or compressed air



VS/040294DS



Optional Accessories

- 30 cm Extension Lance with Nozzle made of Rigid PVC, Chrome Plated Brass Polyurethane Flexible Tube
- Brass Insert Nozzle 0.5mm for Finer Pattern
- 

[BACK TO TOP >](#)

**Application:** Diluted Acids & Caustic Soda

- |                          |                                  |
|--------------------------|----------------------------------|
| • Carry Strap            | • VITON Gaskets / O-Rings        |
| • Liquid Capacity 5lit   | • Acid Proof Flat Fan Nozzle 80° |
| • Robust Nylon Trigger   | • Height 52.5cm, Weight 1.8kg    |
| • Pressure Release Valve | • Working Pressure 3 bar/ 44 psi |
| • 2 Sections PVC Wand    | • Acid Resistant Flexi Hose      |



GS/085.0000

This unit may only be used for applying the following substances:

- Nitric acid up to 10%, -Acetic acid up to 10%,
- Propionic acid up to 10%, -Hydrochloric acid up to 10%,
- Phosphoric acid up to 30%, -Sulphuric acid up to 30%,
- Caustic potash up to 20%, -Caustic soda up to 20%.

**These details do not apply to mixtures of different acids or other substances mixed with acids or alkalis!**

**Hydrofluoric acid, formic acid or higher concentrations of acetic and propionic acid are not recommended for use in this unit.**

[BACK TO TOP >](#)

**Application:** Diluted Acids & Caustic Soda

- Nylon Carry Strap
- Liquid Capacity 5lit
- Nylon-Viton Trigger
- Safety Release Valve
- 2 Section Nylon Wand
- VITON Gaskets / O-Rings
- Acid Proof Flat Fan Nozzle 110°
- Weight 1.5kg
- Working Pressure 3 bar/ 44 psi
- Acid Resistant Flexi Hose

**This unit may only be used for applying the following:**

- Nitric acid up to 10%, -Acetic acid up to 10%,
- Prop ionic acid up to 10%, -Hydrochloric acid up to 10%,
- Phosphoric acid up to 30%, -Euphoric acid up to 30%,
- Caustic potash up to 20%, -Caustic soda up to 20%.

*Higher rate of Acids Concentration, Mixture of Acids or with any other Substances are not recommended. For any other acids, please check With us before applying.*

[BACK TO TOP >](#)



DS/AR-5

**Chemical Resistant Professional Back-Pack**

- Viton Seals.
- Robust 12lit. Tank (Hi-Density Polyethylene)
- Non Drip P.P Trigger, Large Inlet Filler with Filter Lid.
- Heavy Duty 65cm PVC Wand + 40cm Extension.
- Adjustable Nozzle.
- Polyester Shoulder Strap.

**Easy changeable handle to right or left**

[BACK TO TOP >](#)



DS/AL3042

**An Ideal Tool for Professional Gardeners & Pest Control Operators**

**It is Built to last forever**

- Stainless Steel Tank
- Powerful Brass Pump with Swivel Handle
- Large Inlet Filter & Cap
- Brass Wand & Cone Nozzle
- Quick Action & Non Drip Trigger
- Trigger integrated with Pressure Gauge
- Carry Strap with Comfortable Shoulder Pads

[BACK TO TOP >](#)



GS/282.5000

**An Ideal Tool for Professional Gardeners & Pest Control Operators**

- Hi-Density Polyethylene Tank
- Powerful Pump
- Carry Strap with Comfortable Shoulder Pads
- Brass Wand & Cone Nozzle
- Large Inlet Filter
- Quick Action & Non Drip Trigger
- Changeable Left/Right Pump Lever

[BACK TO TOP >](#)



GS/0041.500

**Application:** Cleaning, Pest Control, Construction & Auto Industries

- Robust Structure
- *VITON* Gaskets & O-Rings, which resist to many types of chemicals
- Brass Wand with Adjustable Nozzle 0 - 60°
- Heavy Duty *PPN* Pump
- Non Drip Oil Resistant *Polyamide* Trigger
- Hi-Density *Polyethylene* Tank
- Automatic & Manual Safety Pressure Valve
- *Polyester* Shoulder Strap
- Actual Capacity 8lit. / Liquid Capacity 5lit
- Working Pressure 3 bar/ 44psi
- Also available with optional: Rigid PVC, Adjustable & Flat Fan Nozzle



GS/081.0000

Optional PVC Lance with Fanjet Nozzle



[BACK TO TOP >](#)

**Application:** Cleaning, Pest Control, Construction & Auto Industries

- Robust Structure
- *VITON* Gaskets & O-Rings, which resist to many types of chemicals
- Brass Wand with Adjustable Nozzle 0 - 60°
- Heavy Duty *PPN* Pump
- Non Drip Oil Resistant *Polyamide* Trigger
- Hi-Density *Polyethylene* Tank
- Automatic & Manual Safety Pressure Valve
- *Polyester* Shoulder Strap
- Actual Capacity 10lit. / Liquid Capacity 8lit.
- Working Pressure 3 bar/ 44psi



GS/049.348OR

Optional Brass Fanjet Tips with Nozzle Holder



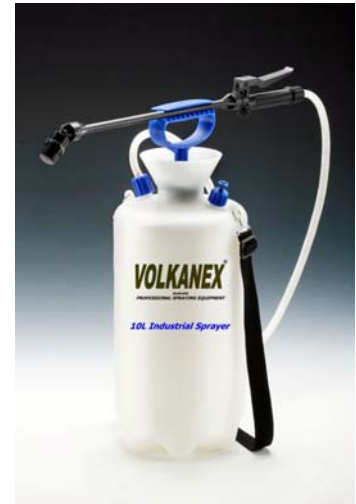
[BACK TO TOP >](#)

**Application:** General Cleaning Chemicals

- VITON Gaskets & O-Rings
- Nylon Wand with Adjustable Nozzle
- Heavy Duty PPN Pump
- Robust Nylon – Viton Trigger
- Hi-Density Polyethylene Tank
- Oil Resistant Hose
- Polyester Shoulder Strap
- Automatic & Manual Safety Valve
- Actual Capacity 10lit. / Liquid Capacity 8lit.
- Working Pressure 3 bar/ 44psi

**Optional Accessories:**

- 50 cm extension Nylon Wand
- Nylon Fanjet Tip with Nozzle Holder
- Brass Fanjet Tip 9505 with Nozzle Holder for Construction



8lit. DS/AL4004

[BACK TO TOP >](#)

- Robust Structure
- NBR Gaskets & O-Rings
- Heavy Duty PPN Pump
- Hi-Density Polyethylene Tank
- 2m Hose
- Nylon Shoulder Strap
- Automatic & Manual Safety Valve
- Working Pressure 3 bar/ 44psi
- Working Temperature  $\pm 0^{\circ}\text{C} \leq + 40^{\circ}\text{C}$

**Ball Valve & Rigid Wand is an extra option**

DS-M4004/SB

**Multi Purpose & Versatile Professional SprayerS**

- Robust Structures
- VITON Gaskets & O-Rings
- Pressure Gauge
- Heavy Duty Brass Pump
- Polyester Shoulder / Back Straps
- Auto & Manual Safety Valves
- 1.4m Chemical Resistant Flexi Hose
- Brass Trigger, Wand & Nozzle
- Tanks Capacity 8 & 13.7lit
- Working Pressure 6 bar/ 85 psi

[BACK TO TOP >](#)

GS/TOGL

These sprayers are also available in **Dual system type** which can be pressurised with either manual pumping or compressed air

**Application:** Upholstery Cleaning & Auto Detailing

- Robust Structures
- VITON Gaskets & O-Rings
- Pressure Gauge
- Heavy Duty Brass Pump
- Polyester Shoulder / Back Straps
- Auto & Manual Safety Valves
- Fanjet Nozzle 8002E
- RL16 Sprayer Gun
- Tanks Capacity 8 & 13.7lit
- Working Pressure 6 bar/ 85 psi
- Working Temperature  $\pm 0^{\circ}\text{C} \leq + 50^{\circ}\text{C}$
- 4m (starched) Polyurethane fitted Spiral Hose



GS/TSG

Also Available With wide range of different Nozzles or Extension Lances, Suitable for your job

[BACK TO TOP >](#)

These sprayers are also available in **Dual system type** which can be pressurised with either manual pumping or compressed air



**Application:** Tyre Shine machine for the busy workshops

- VITON Gaskets & O-Rings
- Pressure Gauge
- Heavy Duty Brass Pump
- Polyester Shoulder / Back Straps
- Auto & Manual Safety Valves
- Fanjet Nozzle 400025, with strainer
- Robust AA31 Sprayer Gun
- Tanks Capacity 8 & 13.7lit
- Working Pressure 6 bar/ 85 psi
- Working Temperature  $\pm 0^{\circ}\text{C} \leq + 50^{\circ}\text{C}$
- 4m (starched) Polyurethane fitted Spiral Hose



GS/TYSH

Also Available With wide range of different Nozzles or Extension Lances, Suitable for your job

[BACK TO TOP >](#)

These sprayers are also available in **Dual system type** which can be pressurised with either manual pumping or compressed air



**Applications:** Injection of Anti-Damp Materials

- VITON Gaskets & O-Rings
- Pressure Gauge
- Heavy Duty Brass Pump
- Polyester Shoulder / Back Straps
- Auto & Manual Safety Valves
- Brass Trigger with 3 Lances in 25, 35 & 45cm length
- 2m Industrial grade Hose Fitted with Auto Shut-Off Quick Fitting
- Tanks Capacity 8 & 13.7lit
- Working Pressure 6 bar/ 85 psi
- Working Temperature  $\pm 0^{\circ}\text{C} \leq + 50^{\circ}\text{C}$



**GS/TAD**

**These sprayers are also available in *Dual system type* which can be pressurised with either manual pumping or compressed air**



**Applications:** Renderer's Water Sprayers

- VITON Gaskets & O-Rings
- Pressure Gauge
- Heavy Duty Brass Pump
- Polyester Shoulder / Back Straps
- Auto & Manual Safety Valves
- 1.4m Chemical Resistant Flexi Hose
- Brass Trigger, Wand & Cone Nozzle
- Tanks Capacity 8 & 13.7lit
- Working Pressure 6 bar/ 85 psi

**Optional Brass Adjustable Nozzle**



**GS/TRND**

[BACK TO TOP >](#)

These sprayers are also available in **Dual system type** which can be pressurised with either manual pumping or compressed air

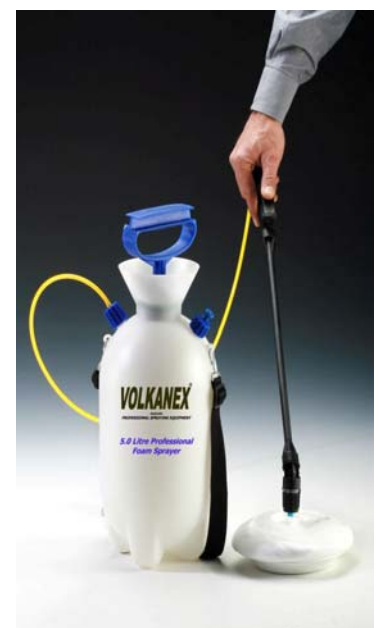


**VOLKANEX Foam maker creates real clinging foam like shaving cream**

**Features:**

- Robust Structure
- Manual Safety Valve
- 50cm PVC Wand with Fanjet Nozzle
- VITON Gaskets & O-Rings
- Heavy Duty PPN Pump
- Non Drip Oil Resistant Polyamide Trigger
- Hi-Density Polyethylene Tank with Polyester Shoulder Strap
- Actual Capacity 8lit., Liquid Capacity 5lit
- Working Pressure 3 bar/ 44psi

**+ A Swivel Multi Angle Nozzle for closer Application**



**VF/AL5000**

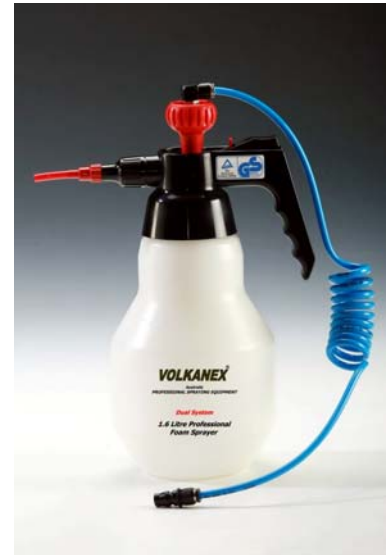
[BACK TO TOP >](#)

**Application:** Auto detailing, Carpet & Upholstery Cleaning,  
Food Industry and Concrete Dissolver

**Features:**

- VITON Seals
- Heavy Duty Nylon Head & Pump
- Liquid Capacity 1.3lit.
- Polyurethane Tube Foam Nozzle
- Automatic Pressure Release Valve
- Max. Pressure 4bar/58psi
- S. Steel Springs
- 1.5m Stretched Chemical Resistant Spiral Hose

**\*Dual system** provides pressurizing options,  
either pump-up or compressed air



VF/040294



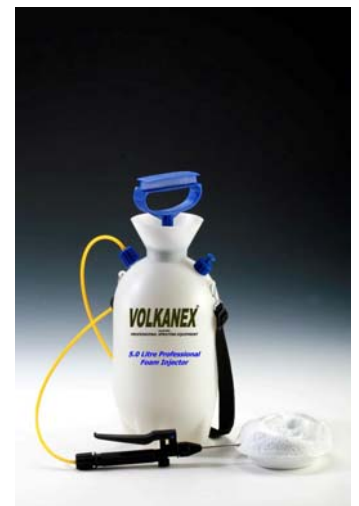
[BACK TO TOP >](#)

**VOLKANEX Foam maker creates real clinging foam like shaving cream**

**Application:** Injection of Foam based Termicide into Wall Cavity & Void Areas

**Features:**

- Robust Structure
- VITON Gaskets & O-Rings
- Heavy Duty PPN Pump
- Heavy Duty Trigger with S. Steel Injector Tube
- Hi-Density Polyethylene Tank with Polyester Shoulder Strap
- Manual Safety Valve, Working Pressure 3 bar/ 44psi
- Liquid Capacity 5lit., Actual Capacity 8lit.
- Stainless Steel Injector



TF/AL5000

## TURMITE FOAM INJECTOR / 1.6lit. \*DUAL SYSTEM

KLAGER / GERMANY

**Application:** Injection of Foam based Termicide into Wall Cavity & Void Areas

### Features:

- VITON Seals
- Heavy Duty Nylon Head & Pump
- Liquid Capacity 1.3lit
- Automatic Pressure Release Valve
- Max. Pressure 4bar/58psi
- S.Steel Springs
- 30 cm Flexible tube with S.S. Injector tube
- 1.5m Stretched Chemical Resistant Spiral Hose

**\*Dual system** provides pressurizing options,  
either pump-up or compressed air



TF/040294DS



## WINDOW TINTING

KLAGER / GERMANY

**Specially Designed For Window Tinting Industry**

### Features:

- Robust Industrial Grade Sprayer
- VITON Gaskets & O-Rings
- Heavy Duty PPN Pump
- None Drip, Chemical Resistant Nylon Trigger
- HPDE Tank (Liquid Capacity 5lit. Actual Capacity 8lit.)
- Auto/Manual Pressure Release Valve
- Polyurethane Spiral Hose (2m Stretched)
- Adjustable Nozzle with curved Adaptor

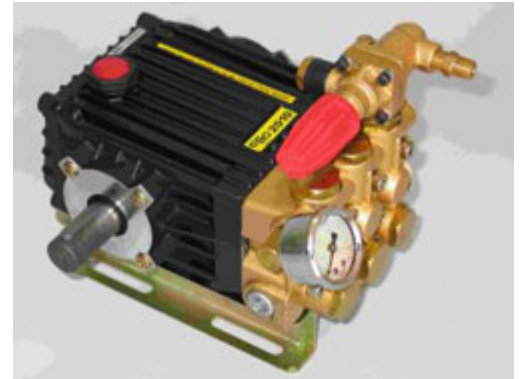
[BACK TO TOP >](#)



GS/081.WTNT

**Industrial High-Pressure Pump for Professional Users**

- 140 bar / 2000psi Pressure – 10lit./min
- Aluminium-Zinc Alloy Crankcase
- Brass Cylinder & Cylinder Heads
- Industrial Grade Ceramic Pistons
- Brass Control Unit
- In-Built Recirculation Systems
- Temperature up to 60°
- Stainless Steel Pressure Valve

[BACK TO TOP >](#)**2010****Industrial High Pressure Hose**

- Oil resistant synthetic rubber hose, wire braided
- Colour: Black with excellent flexibility
- Outside Dia: 14.1mm
- Inside Dia: 6.3mm / ¼ inch
- Temp Range: - 40 °C to + 100 °C
- Working Pressure: 3260 psi / 225 bar (1/4" BSB)
- Both Ends Fittings

**03.WB.WB10**

- PUMP: Triple Ceramic Piston Pump, Stainless Steel Pressure Valve, Brass Cylinder & Cylinder Heads, Built-In Overflow System, 35 bar Pressure – 30lit/min, Attached Control Unit.
- ACCESSORIES: Suction Hose with Filtration, Overflow Hose, Swivel Fittings.

[BACK TO TOP >](#)**3035**

**Application:** Pest Control

- 3 layer Nylon Braided Hose in 50m Roll
- Colour: Yellow
- Outside Dia: 18.34mm
- Inside Dia: 10mm
- Max. Temp: 60 °C @ Max. 580psi / 40 bar
- Max Working Pressure: 1000 psi / 70 bar



**03.PS.YH50**

[BACK TO TOP >](#)

- 3 layers Nylon Braided Hose with excellent flexibility
- Colour: Black
- Outside Dia: 13.8mm
- Inside Dia: 6.5mm
- Max. Temp: 60 °C @ Max. 1000psi / 70 bar
- Max Working Pressure: 2000 psi / 140 bar



**03.WB.BH50**

# Professional Spraying Accessories

## Power Spray Gun

- Standard AMT Ceramic Spray Tip with 1.5
- Max. Spray Tip Hole: 2.3
- Max. Operating Pressure: 40 bar/600 psi
- Weight: 660g
- Length: 300 – 600mm / 11.7" - 23.6"



TG/35.901.16

## PA-RL 16 Spray Gun

- Viton Gaskets & O-Rings
- Rated Pressure: 160bar 2300psi
- Rated Flow: 30 l/min 8 USGpm
- Rated Temperature: 100° C 210° F
- Inlet Tread: ¼ Bsp M



RL16 Spray Gun

## Brass Trigger

- Heavy Duty Brass Trigger with **VITON** Gasket & O-Ring



GP/707340.0000

## “PRO 5 & PRO 8” Trigger

- Complete Trigger with **VITON** Seals



TG/727012.0000

## Brass Gun jet AA31

- Rated Pressure: 35bar 500psi
- Rated Flow: 19 l/min 5 USGpm
- Inlet Tread: ¼ NPS M



TG/AA31

## Pressure Regulator

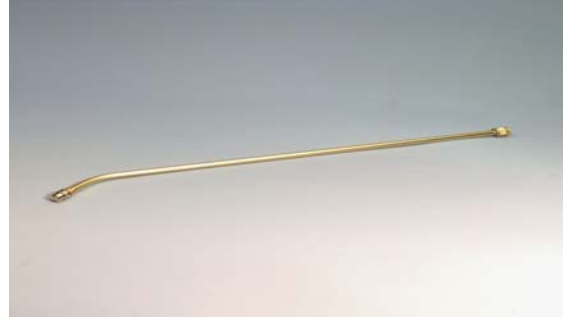
- Can be used with all Gloria industrial sprayers.
- It enables to have a fixed pressure rate
- Suitable for precision spraying



GA/22.0000

## 50cm Curved Brass Wand

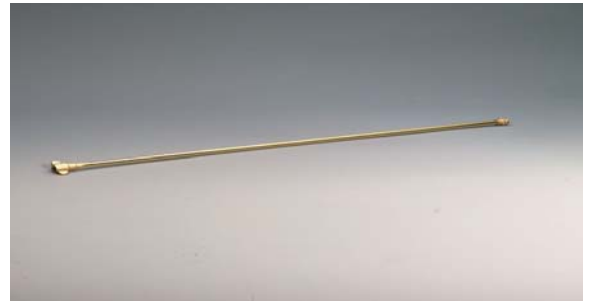
- 50cm Heavy Duty Brass Wand with **VITON** O-Ring



LC/706500.0000

## 50cm Extension Brass Wand

- 50cm Straight Brass Extension Wand
- Equipped with **VITON** O-Ring.



Lc/124.0000

## FOR ALL GLORIA HEAVY DUTY SPRAYERS

## 1 & 2 Meter Brass Telescopic Lance

- Available in 1 & 2m stretch length.
- Handy tools for hard to reach spots.



1m Lc/131.0000  
2m Lc/132.0000

## BRASS CONE NOZZLE JET 1MM

- Suitable for all Gloria Sprayers



Nz/725830.0000

## Adjustable Brass Cone Nozzle

- Adjustable Brass cone nozzle, suitable for all Gloria industrial sprayers
- Spraying patterns can be adjusted from fine to coarse



Nz/113.0000

## Multi Angle Swivel Nozzle

- Multi Angle Swivel Cone Nozzle
- Great Tool for Difficult to Reach Spots such as Under Bench Tops



Nz/701910.0000

## Brass, Stainless Steel, Ceramic Insert, Nylon

We have a wide range of nozzles & tips in different type of materials, forms, angles, outputs & patterns for the different applications

Please contact us for most suitable Nozzles & prices



## Brass Nozzle Holder

- Brass nozzle body consists of nozzle(tip) holder & cap + PE washer

**Nozzle/Tip is not included**



Nz/111.0000

## Stainless Steel Cleaner Nozzle

- Wash Nozzle 15035- 1/4"
- Wash Nozzle 15035 -1/8"



## For Hi-Pressure Cleaning Unit

- Nozzle Size: 40
- Max. Pressure: 3000psi / 207bar
- Max. Temperature: 90 °C / 194 °F
- Inlet Tread: 1/4 Bsp F
- Weight: 335g / 11.8oz



UR25-40

## Air Compressor Handle

Heavy-Duty Brass Air Connector Handle with Air Nozzle & Auto Pressure Release Valve. An Alternative to Manual Pumping for all Gloria Compression Sprayers.



GA/135.0000

## Sprayer Trolley

- Zinc Plated Frame
- Suitable for 10lit. Gloria Sprayers
- Equipped with 2 Heavy Duty Wheels
- Plastic Handle Grip

**Just for Illustration of the Trolley**

[BACK TO TOP >](#)



# MOLECULAR CEMENT DISSOLVER

THIS NEWLY DEVELOPED CONCEPT IS  
TOTALLY SAFE AND USER FRIENDLY

## BACK-SET™

- NON-HAZARDOUS TO EQUIPMENT
- NON-CORROSIVE TO PAINT
- NON-FUMING
- BIODEGRADABLE
- ACID ALTERNATIVE
- COST EFFECTIVE

SAFE  
AND  
EFFECTIVE

**URNS HARD SET UP CEMENT BACK  
INTO RINSABLE MUD!**

**BACK-SET** IS AN ACID ALTERNATIVE WITH NO FUMES OR ODORS. THIS SAFE, BUT EFFECTIVE ALTERNATIVE IS A NEWLY DEVELOPED CONCEPT IN CHEMISTRY. **BACK-SET** MOLECULARLY ATTACKS THE PORTLAND IN CEMENT, COMPLETELY DISSOLVING THE HARDENED MOLECULAR STRUCTURE BACK INTO RINSABLE MUD! THIS TYPE OF IONIC EXCHANGE HAS NEVER BEEN USED BEFORE IN OUR INDUSTRY. THIS PRODUCT IS ONE OF A KIND!



**BACK-SET** DOES NOT CONTAIN MURIATIC, HYDROCHLORIC, HYDROFLUORIC, SULFURIC OR PHOSPHORIC ACIDS. THE ACTIVE INGREDIENT OCCURS NATURALLY IN SUGAR CANE SYRUP.

**SPECIFICATIONS:**

BACK-SET MAY BE USED TO REMOVE CURED CEMENT, CONCRETE, MORTAR, GROUT AND STUCCO OFF VIRTUALLY ANY SURFACE WITH-OUT HARM.

EQUIPMENT TYPE: READY MIX TRUCKS, MIXERS, VEHICLES, FORMS, MOLDS, BUGGIES, SHIP-HOLDS, TANKERS, PUMPS, TROWELS, SCREEDS, VIBRATORS, CONCRETE SAWS, SLIP FORM PAVERS, AUGERS, ETC.

## EARTH - FRIENDLY PRODUCTS

*Meeting the environmental challenge into the  
21st century*

- 5.0lit. Back-Set: BAC/BT5.0L
- 20lit. Back-Set: BAC/BT20L



5.0lit. **PUMP-UP** foam sprayer is an ideal tool to apply Back-Set for the big jobs



1.6lit. **DUAL SYSTEM** foam sprayer is an ideal tool to apply Back-Set quickly & efficiently

*\*Dual system* sprayer provides options for pressurizing, either with manual pumping or compressed air



1.0lit. **PUMP-UP** foam sprayer is a handy tool to apply Back-Set for the small jobs

[BACK TO TOP >](#)